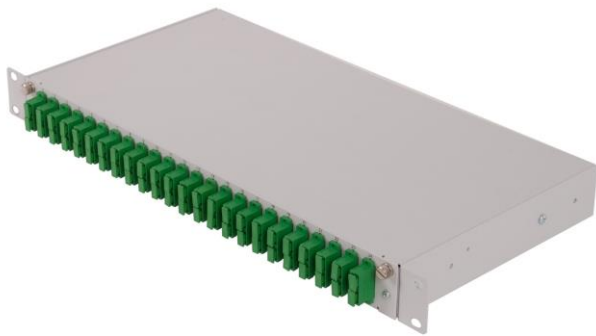


Rack Mount TMVJ – Cabinet with slide-out shelf

Description:

The TMVJ Fixed Cabinet introduces a compact, low cost solution for fiber optic cable termination. The TMVJ series is ideal for rack-mounting in confined areas such as equipment enclosures where rack space is limited. The cabinet is equipped with slide-out shelf with splice tray holder. This allows easy access to the splicing area for optical network reconfiguration during operation and prevents damage to fibers prior to routing into adapters. The modular system allows splicing and termination up to 48 fibers in rack height 1U.



TMVJ-1U with FT-24-DSC
Base unit with Front panel for 24x DSC adapters

Features:

- FTTH use - holder for minicables or microtubes
- Designed for cable or microtubes termination
- Compact robust design
- Slide-out shelf provides unrestricted access
- Changeable front panel, various adapters
- Coupling adapters mounted on the face panel
- Accommodates up to 48 fibers in 1 rack unit
- Durable powder coat finish
- Cable strain-relief and grounding provisions
- Accepts the industry's most common connector types
- Powder coating color RAL 7035

Technical specifications:

PART NUMBER	FIBER CAPACITY		RACK UNITS	DIMENSIONS (HxWxD) mm	SHIP WGT (kg)
	FT-12-XX	FT-24-XX			
TMVJ – 1	12 (24) ¹	24 (48) ¹	1	44 x 432 x 221	3.5

Note: 1) Fiber capacity is valid for SFF connector types, double capacity for duplex adapters (DLC, DSC)

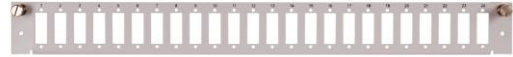
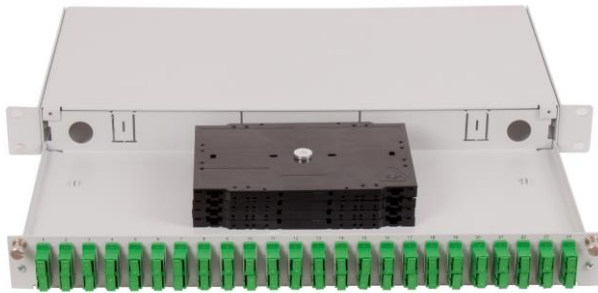
Coupling panels FT series available for the common used connector adapter types in following configuration:

FT-12-XX 12 pcs ST, FC, SC, E2000, ... adapters
 FT-24-XX 24 pcs ST, SC, E2000, ... adapters

Applications:

- Rack-mount
- FTTH networks
- Customer premise remote cable drop

Product information and specifications:



TMVJ-1-48-DSC A-4
internal layout – SC/APC patch panel and 4 splice cassettes

standard front panels:

FT-12-DSC	12x duplex SC adaptors
FT-24-DSC	24x duplex SC adaptors
FT-24-SC line	24x single SC adaptors in-line
FT-12-ST(FC)	12x single ST (FC) adaptors
FT-24-ST(FC)	24x single ST (FC) adaptors
FT-12-SC	12x single SC adaptors
FT-24-SC	24x single SC adaptors

Ordering Code:

TMVJ-X	-	XX	-	XX(F)² X	-	X
Version Rack Unit 1 1U		Fiber Capacity 12 – 48 fibers		Coupling Type ST ST SC(F) SC FC FC E2(F) LSH (E2000) MJ MT-RJ DSC(F) duplex SC DE2 duplex E2000 DLC(F) duplex LC DMU(F) duplex MU Application M Multimode S Singlemode A APC		Splice trays 1 – 4

Note: 2) "F" – fixed adaptors by screws